

## PWJDM Velocity Stack

### Installation Guide

This install will take ~1 hour depending on how familiar you are with your car and tools.  
Read these instructions before you begin to make sure you have the proper tools to get the job done.

1. Remove the PWJDM intake from the engine.
  - a. Undo the hose clamps
  - b. Remove the air filter and breather tube
  - c. Remove the PWJDM intake tube

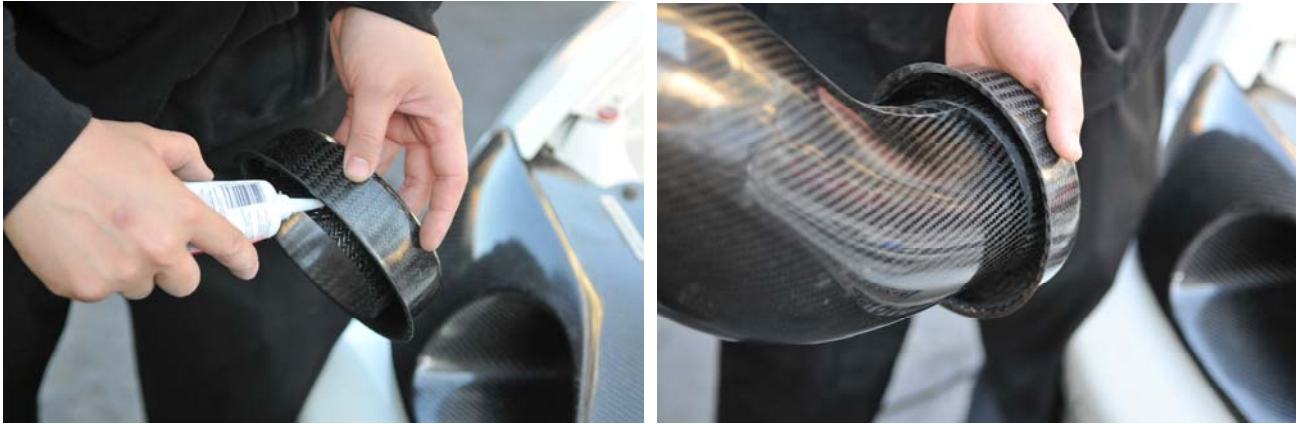


2. Test fit the velocity stack.
  - a. Slide the velocity stack onto the intake tube and reinstall air filter.
  - b. See if it all fits in your car engine bay.
  - c. If so, glue on the velocity stack with engine gasket sealer and let dry as recommended.
  - d. Reinstall everything and start driving.
3. Cut the intake tube.
  - a. Most likely adding the extra length of the velocity stack won't allow you to fit your intake back into the car.
  - b. You have to cut down the intake tube to compensate for the length of the velocity stack.
  - c. Mark off the needed length you need to remove from the intake tube that allows you to fit the whole system back into the car. You can use a silver marker or tape to mark off the cut line. You may want to cut off a half inch at a time to keep the max length of your intake.
  - d. You should not remove more than 1.6 inches (length of velocity stack) from the intake tube.
  - e. Wear a filter mask and safety glasses when cutting; carbon fiber dust is very unhealthy.
  - f. A Dremel with cutting wheel is recommended but a fine toothed hacksaw or vertical bandsaw will work too.
  - g. Use some 100+ grit sandpaper to clean up the cut edge.
  - h. Don't sweat a perfect cut since the velocity stack will cover up the edge of the cut.



4. Test fit the cut intake.
  - a. Reinstall the intake tube with the velocity stack and air filter to make sure it all fits back in the car.
  - b. If it doesn't fit, you need to cut a little more off the end of your intake tube.

5. Glue on the velocity stack
  - a. If things fit well, you can permanently glue on the velocity stack to the intake tube with gasket maker or silicone glue.
  - b. Make sure you glue it completely around, you don't want any air leaks.
  - c. Allow the recommended drying time for the glue to set.



6. Reinstall the intake system and drive.

